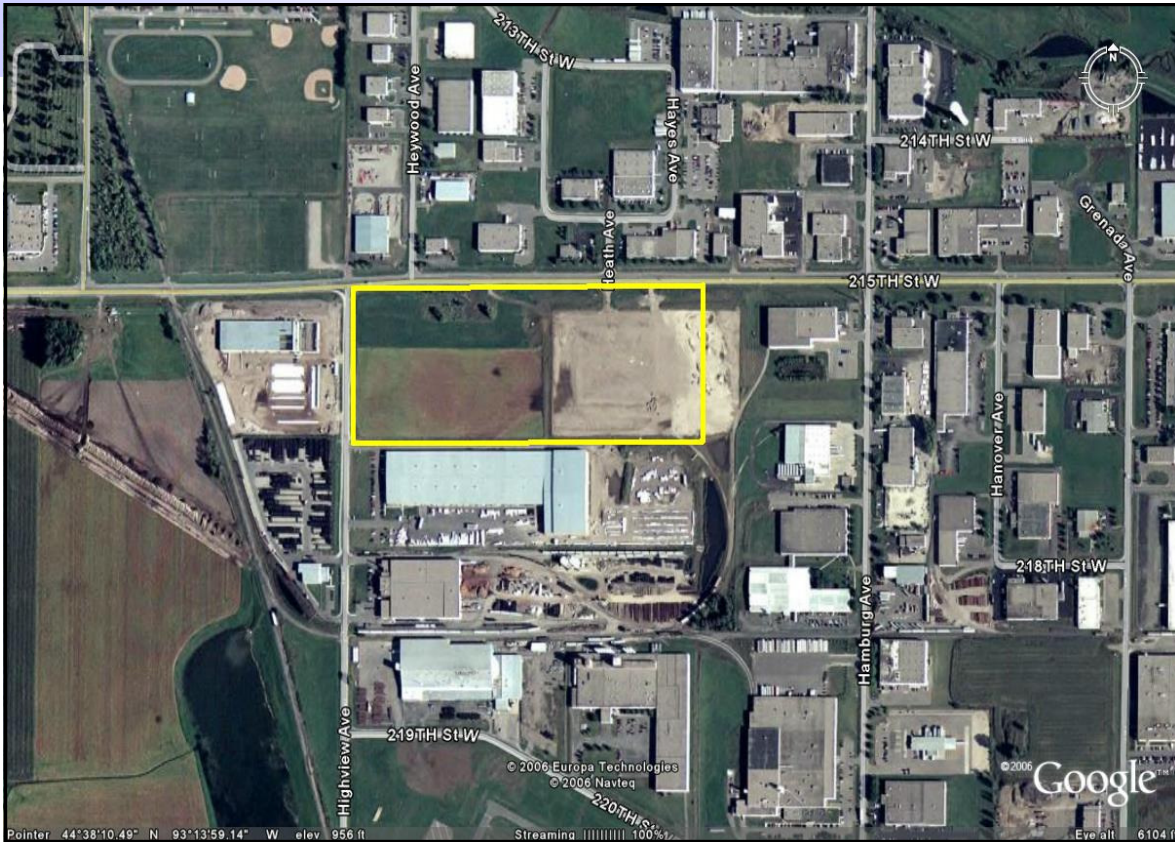


# Industrial Land For SALE

## Airlake Industrial Park

### Lakeville, MN



- ◆ 25 acres zoned I-1
- ◆ Dividable
- ◆ Rail Access - Serviced by Progressive Rail
- ◆ 10 acres platted
- ◆ 14 acres unplatted
- ◆ Outside Storage Permitted
- ◆ Visibility on County Road 70, 2 miles off I-35
- ◆ Located in Minnesota's second largest Industrial Park.

# CERRON

**Commercial Properties, LLC**

For Additional Information Contact:

Bruce Rydeen, Agent

Jarrold Gray, Agent

Jack Matasosky, Broker

[www.cerron.com](http://www.cerron.com)

[brucer@cerron.com](mailto:brucer@cerron.com)

[jarrodg@cerron.com](mailto:jarrodg@cerron.com)

Phone: (952) 469-9444

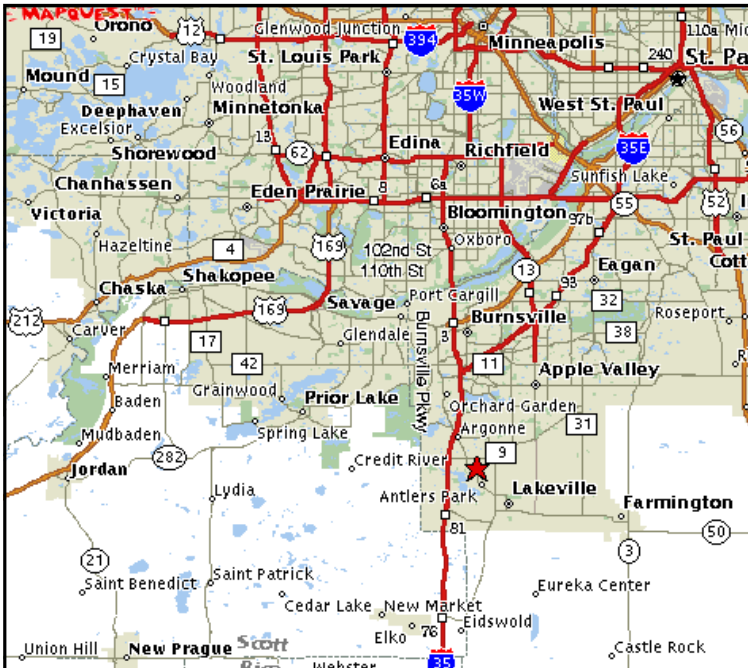
# CERRON

Commercial Properties, LLC  
21476 Grenada Avenue  
Lakeville, MN 55044

**This and other properties  
can be found at:**

**[www.cerron.com](http://www.cerron.com)**

We are located at:  
21476 Grenada Avenue  
Lakeville, MN 55044  
Phone: 952-469-2171 or 952-469-9444  
Fax: 952-469-2173



# CERRON

Commercial Properties, LLC

Full Service Commercial/Industrial Real Estate

- \* Land or Buildings
- \* Acquisition, Leasing, or Sale
- \* Investment Properties/1031 Exchanges
- \* Design/Build
- \* Build to Suit

[www.cerron.com](http://www.cerron.com)

## APPRO DEVELOPMENT INC.

Architecture, Planning & Construction

- \* Pre-construction - feasibility, budgeting, architectural programming
- \* New construction - from design through construction
- \* Existing facility - Additions, Renovations
- \* Financial - Finance Options, SBA, T.I.F.
- \* Regulatory - Zoning, Permits, Variances

[www.approdevelopment.com](http://www.approdevelopment.com)